

What's New for 2024/25

in the Royal Borough of Greenwich, London

World famous for the Meridian Line and Greenwich Mean Time (GMT).

The Royal Borough of Greenwich has the longest Thames riverfront of all the London boroughs; it is one of three Royal Boroughs in London and has one of London's four World Heritage Sites.

Explore: Maritime Greenwich World Heritage Site

Old Royal Naval College –

Visitor Centre, Painted Hall, Chapel and grounds,

And campus for the University of Greenwich and Trinity Laban Conservatoire of Music and Dance

Royal Museums Greenwich –

Cutty Sark, Royal Observatory & Planetarium, National Maritime Museum, Queen's House

Greenwich Park, London's oldest enclosed Royal Park

Greenwich Market, Ranger's House, St Alfege Church, The Fan Museum.

Sightseeing, unique experiences, irresistible shopping, eating and drinking, places to stay, all in a beautiful riverside setting.

Experience: Greenwich Peninsula

The O2 – the world's most popular music and entertainment venue, plus Up at The O2, Outlet

Shopping at The O2, trampolining, bowling, cinema, football,

indoor skydiving, battle bar and a street full of bars and restaurants.

IFS Cloud Cable Car, Greenwich Peninsula Golf Driving Range, CrazyPutt Adventure Golf, The

Tide riverside park, weekend markets, NOW Gallery, Design District, The Line public art walk,

InterContinental London – The O2 and a delicious array of places to pause and refuel.

Discover: the whole incredible destination

Eltham Palace and Gardens, where 1930s decadence meets medieval heritage

Woolwich Works landmark cultural venue in the historic Royal Arsenal

Outstanding accommodation, beautiful parks and open spaces and year-round festivals and events.

Adventure: sightseeing and travel

By river with Uber Boat by Thames Clippers, City Cruises and Thames River Sightseeing

London Underground, Docklands Light Railway (DLR), Elizabeth Line and

mainline trains (Southeastern and Thameslink)

Just 10 minutes from London Bridge

Find out more at [visitgreenwich.org.uk](https://www.visitgreenwich.org.uk)



Anniversaries in Greenwich

- **10th Anniversary of NOW Gallery** – 2024
- **25th Anniversary of Thames Clippers** – 2024
- **30th Anniversary of British Science Week (BSW)** – The theme for 2024 is... 'Time'!
- **40th Anniversary of Thames Barrier protecting London from devastating floods** – 8 May 2024
- **76th Anniversary of Windrush** – 22 June 2024
- **140th Anniversary of Greenwich as 'the home of time' (Greenwich Mean Time)** – 2024
- **200th Anniversary of the Royal National Lifeguard Institution (RNLI)** – 2024
- **80th Anniversary of D-Day** (6 June 1944) – **6 June 2024**
- **350th Anniversary of founding of Royal Observatory Greenwich** – 2025
- **100th Anniversary of filming at Old Royal Naval College** – 2025
- **30th Anniversary of Greenwich+Docklands International Festival** (Festival.ORG) – 2025

2024 – 2025 Unmissable Events, Experiences and Exhibitions

- **Greenwich Peninsula Art Trail** – Explore Greenwich Peninsula's public art trail featuring a number of public art from some of the world's most renowned artists, Greenwich Peninsula, all year round.
- **NOW Gallery** – A striking and light-filled gallery hosting changing contemporary exhibitions of art, fashion & design. Check the website for exhibition programme, Greenwich Peninsula, open daily.
- **iFly London at The O2** – An unforgettable indoor skydiving experience awaits you. Replicating the exact experience of freefall, budding daredevils can experience the joy of human flight without so much as a parachute, The O2, open daily.
- **Hidden Spaces Tours at St Alfege Church, Galleries & Crypt** – Descend into the crypt area, revealing the many stories of the people who have played their part in the history of Greenwich. Fortnightly on Saturdays.
- **Courtyard Live** – A FREE summer music programme for all the community with free and fun cultural performances from across the world on the summer courtyard stage. Woolwich Works, until 9 September 2024.

Visit Greenwich

2 Cutty Sark Gardens, Greenwich, London SE10 9LW

020 8103 3055 • info@visitgreenwich.org.uk • visitgreenwich.org.uk • [@visitgreenwich](https://www.instagram.com/visitgreenwich)

Royal Borough of Greenwich Destination Management Company • Company Number: 08543882

- **Up in Smoke Exhibition** – A vibrant, colourful and interactive installation that tells the story of Greenwich Peninsula through its iconic chimneys, evoking the memories of the area's lively past, and its transformation from a historic former marshland to the vibrant cultural hub it is today, NOW Gallery, until 22 September 2024.
- **Secret Dome Tours** – The Old Royal Naval College will once again invite visitors to climb the steps high inside the Chapel dome with an exclusive Dome Tour, Old Royal Naval College, groups of 6 max, available until October 2024.
- **Chocolate House Greenwich**, uncover the fascinating meeting place for sophisticated society where culture, science, and indulgence converged around the exotic delicacy in early 1700s' Greenwich. Old Royal Naval College, until 3 November 2024.
- **Women of the RNLI Exhibition** – Celebrate Britain's female lifesavers with at the National Maritime Museum, until 1 December 2024.
- **Viola's Room Immersive Experience** – A groundbreaking experience, where storytelling meets innovation. Viola's Room is a linear audio-based journey where you will explore a sensory world, guided by light and sound. Punchdrunk – Royal Arsenal Woolwich, until 23 December 2024.
- **A Breeze From Heaven: Biblical Fans** – This exhibition features English & Dutch fans from the 18th century that depict biblical stories, most of them from the Old Testament, The Fan Museum, 21 August to 19 December 2024.
- **Formula 1® The Exhibition** showcase is bigger and better than ever before with exclusive and iconic Formula 1® championship winning cars, Formula 1® artefacts, simulator experience and contributions from leading teams. ExCeL London, 23 August to 8 September 2024.
- **Totally Thames**, a celebration of diverse & accessible arts and culture with activities and events on and by the River Thames, All of September 2024.
- **Green Chain Walking Festival** – Promoting Green Chain Walk and its many attractions to those living locally, and in London more generally, whether already walkers or not. The walks will vary in length and difficulty so there will definitely be something for everyone!, various locations around Greenwich, 1 to 15 September 2024.
- **Open House London**, the much-loved city-wide celebration of special architecture, landscapes and infrastructure, various locations across London including Greenwich, 6 to 17 September 2024.
- **National Television Awards** – Britain's leading TV awards event where all the winners are chosen exclusively by the audience, The O2 arena, 11 September 2024.
- **Greenwich Comedy Festival**, a line-up of comedy marvels paired with street-food, craft beer and more at the iconic National Maritime Museum, 11 to 15 September 2024.

Visit Greenwich

2 Cutty Sark Gardens, Greenwich, London SE10 9LW

020 8103 3055 • info@visitgreenwich.org.uk • visitgreenwich.org.uk • [@visitgreenwich](https://www.instagram.com/visitgreenwich)

Royal Borough of Greenwich Destination Management Company • Company Number: 08543882

- **Astronomy Photographer of the Year 16**, a special exhibition of over 100 photographs on display at their best on brilliant lightbox displays, National Maritime Museum, opening 13 September 2024 until August 2025.
- **Woolwich Carnival 2024** – An annual celebration of community and culture where residents come to celebrate the borough's diversity, General Gordon Square & Royal Arsenal, 14 September 2024.
- **Black Easts Festival** – An unrivalled experience in street food, music, arts & culture, Woolwich Works, 14 and 15 September 2024.
- **Melek Zeynep Bulut presents 'Duo' for London Design Festival 2024**, a suspended installation in the Painted Hall exploring the concepts of duality and interaction. Painted Hall, 14 to 22 September 2024.
- **Stars of the West Climb** – Taking place across select musical-filled climbs, the venue's 52m-high summit platform will be transformed into a West End stage, where climbers will be treated to a performance of musical hits from West End collective and performance group, ROCK ON! Up at The O2, 19, 20, 26 and 27 September 2024.
- **Ignatius!** – a specially commissioned concert performance with original music about the life and work of Ignatius Sancho, the first Black person to vote in the UK, Greenwich Park Flower Garden, 21 and 22 September 2024.
- **Black History Month (BHM)** – a programme of events and activities celebrating Black History Month, including craft events, book readings, poetry and more, October 2024. Plus, year round BHM365 programme made up of over 100 events across the borough.
- **October Half-Term Activities** take a look at everything going on [here](#).
- **Diwali at Greenwich Peninsula** – Immerse yourself in South Asian culture with Bollywood Dance, Henna Tattoos, Diwali Lantern making and lantern procession and more, Greenwich Peninsula, October/November 2024.
- **Viola's Room Halloween Weekend** – Explore Punchdrunk's enchanting world of Viola's Room during 90s Nostalgia Weekend and experience a few little additions to your visit when you book for selected timeslots, Royal Arsenal, 31 October to 2 November 2024.
- **The 2024 League of Legends World Championship Finals** – Also known as 'Worlds', this is the pinnacle of LoL Esports competition in which the top teams from diverse regions compete for the world title. The O2 arena, 2 November 2024.
- **Lantern Parade and Christmas Lights On** – A delightful Greenwich lantern procession, switching on of the twinkling Greenwich Market Christmas lights and Christmas shopping, Old Royal Naval College Grounds/Cutty Sark Gardens, 20 November 2024.

Visit Greenwich

2 Cutty Sark Gardens, Greenwich, London SE10 9LW

020 8103 3055 • info@visitgreenwich.org.uk • visitgreenwich.org.uk • [@visitgreenwich](https://www.instagram.com/visitgreenwich)

Royal Borough of Greenwich Destination Management Company • Company Number: 08543882

- **Woolwich Contemporary Print Fair | 9th Edition**, London's only fair in contemporary printmaking, Royal Arsenal, 21 to 24 November 2024 | The Online Edition, 21 November to 1 December 2024.
- **Luke Jerram's Mars in the Painted Hall** – An astonishing installation *Mars* is coming to the [Painted Hall](#) this winter. Following the sell-out success of *Gaia* and *Museum of the Moon*, *Mars* will complete the trilogy of Jerram's out-of-this-world installations at the iconic Old Royal Naval College. Painted Hall, 23 November 2024 to 28 January 2025.
- **Sparkle in the Park** – A twinkling winter wonderland for Royal Greenwich residents, November/December 2024.
- **The Spirit of Christmas** – An immersive and theatrical journey through the stunning art-deco mansion, perfect for the whole family. Eltham Palace and Gardens, 23, 24, 30 November & 1 December and 14, 15, 21, 22 & 23 December 2024.
- **Museum by Candlelight** – This Festive Season, see The Fan Museum in a new light... The Fan Museum will open later than usual to welcome its visitors into a magical new take on its exhibition spaces, illuminated almost entirely by candles and underscored by classical festive favourites, The Fan Museum, 14 to 19 December 2024.
- **Disney on Ice presents Road Trip Adventures** – Take a trip down memory lane, as Disney On Ice returns with a magical show for the whole family to enjoy, The O2 arena, 26 to 31 December 2024.
- **Lunar New Year Celebration at Greenwich Peninsula** – Discover the curated programme of events and public displays, contemporary/traditional workshops and get ready to be swept up in the energising rhythm of the Dragon Dance, Greenwich Peninsula, January/February 2025.
- **LGBTQ+ History Month** – Celebrate the queer histories in Royal Museums Greenwich's collections and the magnificent communities. From a festival of LGBTQ+ history, to the Queer History Club and a wonderful ball like no other. National Maritime Museum/Queen's House, February/March 2025.
- **The BRIT Awards**, the UK's biggest and most successful popular music awards show presented by the British Phonographic Industry (BPI), The O2 arena, 1 March 2025.
- **British Science Week 2025** [This year's theme for British Science Week is 'TBA'] – Explore the wonders of space and time at the Royal Observatory Greenwich. The Observatory will be hosting a jam-packed programme of events and there will be something for everyone, Royal Observatory Greenwich, 7 to 16 March 2025.
- **C2C Country to Country Festival**, Europe's biggest country music festival, The O2, 14 to 16 March 2025.
- **TCS London Marathon**, starts in Greenwich Park and continues through the Royal Borough to Woolwich and back round past Cutty Sark in Greenwich, 27 April 2025.

Visit Greenwich

2 Cutty Sark Gardens, Greenwich, London SE10 9LW

020 8103 3055 • info@visitgreenwich.org.uk • visitgreenwich.org.uk • [@visitgreenwich](https://www.instagram.com/visitgreenwich)

Royal Borough of Greenwich Destination Management Company • Company Number: 08543882

- **Urban Village Fete** – This much loved annual event is a free, family fun-filled day of music, feasting, crafting, and dancing, Greenwich Peninsula, May 2025.
- **Greenwich Dog Show** – Enter your precious pup or come along to find out which dog is the prettiest and which has the waggiest tail for a fun day out for the whole family, Old Royal Naval College Grounds, May 2025.
- **Love Your Local Market** – Celebrate Love Your Local Market with a fortnight full of fun by shopping at local designer-maker arts, crafts, antiques and collectibles, lunch out on foods from all over the world, and support local businesses and traders – all whilst enjoying a special programme of free activities, Greenwich Market, May/June 2025.
- **World Oceans Day** – A family-friendly celebration of our blue planet at Cutty Sark/ National Maritime Museum, 8 June 2025.
- **Armed Forces Day Celebration** – An all-day celebration to show support for the men and women serving in the Armed Forces as well as veterans and cadets, June 2025.
- **Royal Greenwich Festivals** – A variety of festivals, workshops and quality performances with free, inclusive, world-class events happening all around the Royal Borough of Greenwich, Summer 2025.
- **Greenwich Family Arts Festival** brings activities including outdoor theatre, workshops, and more to all corners of the borough throughout July 2025.
- **Summer Sessions / Peninsula Summer at Greenwich Peninsula**, a celebration of community spirit, culture and the great outdoors, packed with music, films, culture, food trucks and pop-up bars, Design District – Greenwich Peninsula, Summer 2025.
- **Greenwich Park Bandstand Concerts** – Hugely popular series of free concerts to brighten up your summer. Greenwich Park, June/July/August 2025 [Sundays only].
- **Medieval Season and Legendary Joust at Eltham Palace and Gardens** – Learn what life was like in medieval times and experience the exhilarating spectacle of speed and skill as four legendary knights compete for honour and glory in the Grand Medieval Joust, Eltham Palace and Gardens, July/August/September 2025.
- **Park It in the Market** – An evening of classic cars and bikes, live rock n roll from Ronnie Ripple and the RipChords, vintage vinyl and live DJs from The Vinyl Countdown, Losers Motorcycle Club tea stall, MOT merch, incredible street food and plenty of dancing! Greenwich Market, Summer 2025.
- **KISSTORY On Blackheath** – Come and party with KISSTORY on blackheath, with fair rides, local food offerings and bars galore, all alongside your fave KISSTORY DJs, exclusive live performances and loads of special guests across multiple stages. Blackheath Commons, 26 July 2025.

Visit Greenwich

2 Cutty Sark Gardens, Greenwich, London SE10 9LW

020 8103 3055 • info@visitgreenwich.org.uk • visitgreenwich.org.uk • [@visitgreenwich](https://www.instagram.com/visitgreenwich)

Royal Borough of Greenwich Destination Management Company • Company Number: 08543882

- **Uptown Festival** – Little Town family area returns with plenty of free entertainment & attractions as well as concession fun fair rides for the little one's, plus a family friendly music area with entertainment, DJs and performances with fresh music policy to get you all up and dancing together! Blackheath Commons, 27 July 2025.
- **Turning Tides Music Festival**, a FREE music, arts, film and food festival. returns to Greenwich Peninsula for a weekend of eclectic live performances, Design District – Greenwich Peninsula, August 2025.
- **Greenwich+Docklands International Festival**, London's leading festival of free outdoor theatre and performing arts, various locations across the Royal Borough of Greenwich, August/September 2025.
- **Totally Thames**, a celebration of diverse & accessible arts and culture with activities and events on and by the River Thames, September 2025.
- **The Big Half** – A one day festival centred around the half marathon distance, which aims to be truly global and uniquely local in celebration of the wonderful cultural diversity of the great city of London. Sets off by Tower Bridge and finishes at the famous Cutty Sark, Greenwich, 7 September 2025.
- **Open House London**, the much-loved city-wide celebration of special architecture, landscapes and infrastructure, various locations across London including Greenwich, September 2025.
- **National Television Awards** – Britain's leading TV awards event where all the winners are chosen exclusively by the audience, The O2 arena, September 2025.

*Dates accurate as of 13/09/2024

Find out more at [visitgreenwich.org.uk/events](https://www.visitgreenwich.org.uk/events)

InterContinental London – The O2 Launches New Indian Inspired Afternoon Tea



Chai By The Shore' Afternoon Tea Created by this year's winning team of Bake Off

InterContinental London – The O2 is thrilled to announce its brand new Indian Inspired Afternoon Tea, Chai By The Shore. Designed by this year's Bake Off: The Professionals winners, this afternoon tea combines traditional Western techniques with the rich, aromatic flavours of Indian cuisine, for an afternoon tea experience like no other. The exclusive afternoon tea launches today at the hotel's in-house restaurant, Kinaara, which offers breath-taking views of the River Thames and Canary Wharf.

Chai By The Shore offers a unique afternoon tea fusing traditional teatime dishes with the sweet, spicy, hot aromatic flavours of Indian cuisine to create an expertly crafted menu. Reimagining the traditional afternoon tea, Kinaara's chefs have combined their profound knowledge of spices with the culinary heritage of their backgrounds and cherished food memories, to create perfect pairings that seamlessly blend both cultures for an unforgettable culinary journey of sweet and savoury treats. The delectable offerings are prepared daily by Kinaara at InterContinental London – The O2. Executive Pastry Chefs Narayan Shrestha and Tanuj Sharma, who are this year's winners of Bake Off: The Professionals, have designed the menu using skills and techniques from some of the UK's best chefs for an unforgettable culinary experience.

Perfectly merging the two cultures, tastes and flavours, the afternoon tea offers a combination of sweet and savoury bites. To start with, the tea begins with a selection of traditional Indian street food delicacies including Dhai Puri, Bread Pakora and Paneer Puff, alongside honey glazed Ragstone goat's cheese served with a fig compote, pistachio and beetroot bread, and a traditional Coronation Chicken sandwich with an Indian flare. Followed by an array of sweet treats to choose from, diners can enjoy pistachio and choux pastries, mango tart and potti yoghurt cheesecake. The afternoon tea is perfectly finished off with a selection of scones and rusk, with traditional flavours such as clotted cream and rose and strawberry jams, fused with a burst of Indian delights including fennel rusk and butter milk namleka.

The exclusive afternoon tea will be available 7 Days a week, 12pm -4pm

Visit Greenwich

2 Cutty Sark Gardens, Greenwich, London SE10 9LW

020 8103 3055 • info@visitgreenwich.org.uk • visitgreenwich.org.uk • @visitgreenwich

Royal Borough of Greenwich Destination Management Company • Company Number: 08543882

Luke Jerram's Mars in the Painted Hall

23rd November 2024 to 28th January 2025



Make it your mission to see **Luke Jerram's** astonishing installation **Mars** when it lands at the **Old Royal Naval College** this winter. Following the sell-out success of Jerram's works *Gaia* and *The Museum of the Moon*, *Mars* will complete the trilogy of Jerram's out-of-this-world installations at the iconic Old Royal Naval College in Greenwich. Visitors will be awed by the spectacle of the Red Planet, recreated to scale and installed against the magnificent backdrop of the Painted Hall, often referred to as 'Britain's Sistine Chapel'. This unique pairing brings two breathtaking works of art together, merging science with history and myth.

Measuring seven metres in diameter, this spellbinding artwork features detailed NASA imagery of the Martian surface – about one million times smaller than the actual planet. The internally lit artwork transports us to this famed planet – the closest planet to Earth, which can often be seen in the night sky. *Mars* will feature a surround sound composition by BAFTA-winning composer Dan Jones, including clips from NASA missions to Mars, totally immersing visitors in the experience.

Alongside this awe-inspiring installation will be Mars-themed events including Late and dining events, family workshops and talks.

Visit Greenwich

2 Cutty Sark Gardens, Greenwich, London SE10 9LW

020 8103 3055 • info@visitgreenwich.org.uk • visitgreenwich.org.uk • [@visitgreenwich](https://www.instagram.com/visitgreenwich)

Royal Borough of Greenwich Destination Management Company • Company Number: 08543882

Chocolate House Greenwich Exhibition

29th March to 3rd November 2024



Discover the history and irresistible appeal of chocolate at the Old Royal Naval College with the launch of their new immersive exhibition, Chocolate House Greenwich. The 18th Century was hot chocolate's heyday and visitors can now step back in time to discover its key role in the revival of Greenwich and experience a recreation of Grace and Thomas Tosier's famous 'royal' Chocolate House.

From its origins in Central America to becoming the mark of sophistication for London's Enlightenment-era movers and shakers, the journey of chocolate and its impact on Georgian Greenwich society is traced in this new exhibition. Discover the complex history of chocolate, and its surprising role at the heart of new cultural and scientific conversations at the time.

Visitors can immerse themselves in this historic Chocolate House, favoured by courtiers and ambassadors of the time. The audio and visual experience, created by Unusual Expo and actor-writer Jonathan Coote, presents the flamboyant proprietor of the original Greenwich Chocolate House Grace Tosier – who ran this social hub while her husband Thomas ran the chocolate kitchen at Hampton Court for King George I. Listen in on the great minds of the day including architect and astronomer Sir Christopher Wren, writer and diarist John Evelyn, the first Astronomer Royal John Flamsteed, and playwright and architect John Vanbrugh.

Visit Greenwich

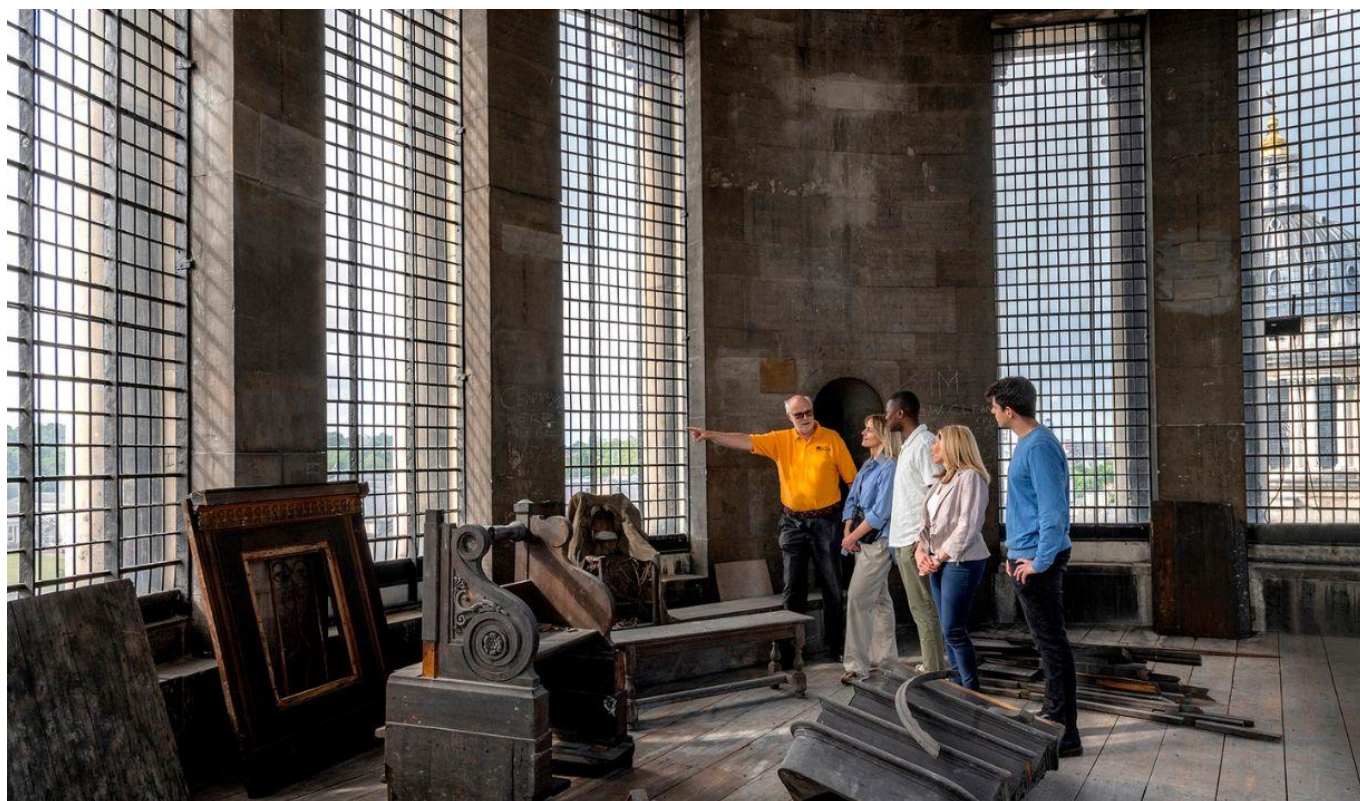
2 Cutty Sark Gardens, Greenwich, London SE10 9LW

020 8103 3055 • info@visitgreenwich.org.uk • visitgreenwich.org.uk • [@visitgreenwich](https://www.instagram.com/visitgreenwich)

Royal Borough of Greenwich Destination Management Company • Company Number: 08543882

Behind-the-scenes Dome Tours at Old Royal Naval College

22nd March to 26th October 2024



Following a sold-out run in autumn 2023, the Old Royal Naval College is bringing back their popular Secret Dome Tours this spring and summer. These exclusive tours are a rare opportunity to climb the steps that very few have walked before, discover the rarely-seen interiors of the Chapel Dome, and enjoy incredible 360° views of the River Thames and the London skyline.

Sir Christopher Wren's remarkable designs will be laid bare on the Dome Tours, an exciting chance to see his stunning architecture up close. Visitors can climb the hidden winding staircase, see the inner workings of the historic turret clock above the Chapel, see the graffiti left behind over the centuries including during WWII, and find out more about those who worked up here over the last 300 years.

The Secret Dome Tours mark the first time that members of the public will have access to this remarkable hidden space on site, providing an exciting opportunity to see behind the scenes and learn more about the rich history of the site, which is part of the Maritime Greenwich UNESCO World Heritage Site.

The Secret Dome Tours run on Fridays, Saturdays and Bank Holiday Mondays only and need to be booked in advance.

Visit Greenwich

2 Cutty Sark Gardens, Greenwich, London SE10 9LW

020 8103 3055 • info@visitgreenwich.org.uk • visitgreenwich.org.uk • [@visitgreenwich](https://www.instagram.com/visitgreenwich)

Royal Borough of Greenwich Destination Management Company • Company Number: 08543882

Royal Museums Greenwich: National Maritime Museum

2nd March to 1st December 2024



© National Maritime Museum, Greenwich



© National Maritime Museum, Greenwich

The **National Maritime Museum** will be hosting “**Women of RNLI**” exhibition from 2 March 2024. The exhibition will celebrate the vital role that women have played in saving lives at sea, highlighting the work and success of women in a variety of roles throughout the RNLI’s 200-year history.

Women of the RNLI will feature a series of 42 photographs by Jack Lowe recently acquired by Royal Museums Greenwich (RMG). The portraits of women that volunteer for the RNLI will be displayed alongside their lifeboat station’s corresponding slipway, putting the landscape that these women operate in at the heart of their stories. The images form part of Lowe’s ongoing *Lifeboat Station Project*, an attempt to photograph all 238 operational RNLI lifeboat stations and crew members at each.

The hugely popular annual **Astronomy Photographer of the Year** exhibition is also here to celebrate the very best in astrophotography from around the world, until August 2024.

In the fifteenth year of the competition, there were over 4,000 entries from passionate amateur and dedicated professional photographers, submitted from 64 countries across the globe. The winning and shortlisted images are displayed in at the exhibition, including awe-inspiring scenes of the Milky Way, vibrant star trails racing across the night sky, and amazing auroral activity.

Visit Greenwich

2 Cutty Sark Gardens, Greenwich, London SE10 9LW

020 8103 3055 • info@visitgreenwich.org.uk • visitgreenwich.org.uk • [@visitgreenwich](https://www.instagram.com/visitgreenwich)

Royal Borough of Greenwich Destination Management Company • Company Number: 08543882

Celebrating the completion of Greenwich Park Revealed



Greenwich Park Revealed has protected our past, improved natural habitats so nature can thrive today, and future-proofed visitor facilities for a growing local population.

After four years of incredible projects, £12 million of investment, and the hard work of our staff and our wonderful volunteers and apprentices, we have completed our ambitious, flagship project, Greenwich Park Revealed.

We have revealed, restored and protected Greenwich Park's threatened unique 17th-century landscape before it disappeared forever.

We have enhanced the natural environment.

We have also delivered new community facilities, new training and learning opportunities, and a programme of free cultural events.

** The Greenwich Park Revealed project wouldn't have been possible without a generous grant from the 'Parks for People' programme, funded by The National Lottery Heritage Fund and Community Fund, thanks to National Lottery players.*

Visit Greenwich

2 Cutty Sark Gardens, Greenwich, London SE10 9LW

020 8103 3055 • info@visitgreenwich.org.uk • visitgreenwich.org.uk • [@visitgreenwich](https://www.instagram.com/visitgreenwich)

Royal Borough of Greenwich Destination Management Company • Company Number: 08543882

The Royal Parks charity unveils new Learning Centre in Greenwich Park



The Royal Parks charity unveiled a brand-new learning space yesterday, Saturday 25th May, in the heart of Greenwich Park to provide new outdoor learning opportunities for schools and community groups.

The charity, which manages London's eight Royal Parks, has funded the project as part of the £12 million, four-year, Greenwich Park Revealed initiative alongside a grant from the Parks for People programme, joint funded by The National Lottery Heritage Fund and The National Lottery Community Fund.

The new building was also made possible from gifts by Garfield Weston Foundation, Fidelity UK Foundation, The Wolfson Foundation, and The Foyle Foundation.

The Greenwich Park Learning Centre was designed and built with accessibility, sustainability, and the surrounding landscape in mind. The indoor learning space sits within a larger outdoor learning area which includes a learning canopy, nature trails, a dipping pond, and a wildlife meadow.

The nearby former Wildlife Centre building has also been transformed into a welcoming entrance with accessible toilet facilities.

Learning partner, the Field Studies Council, is running school sessions from the new Learning Centre as well as other activities out in the park.

Visit Greenwich

2 Cutty Sark Gardens, Greenwich, London SE10 9LW

020 8103 3055 • info@visitgreenwich.org.uk • visitgreenwich.org.uk • @visitgreenwich

Royal Borough of Greenwich Destination Management Company • Company Number: 08543882

The Pavilion Café, Greenwich Park, has opened with a beautiful redesign



The Café boasts a new open kitchen, summer barbeque pop-up area, and outside area with expansive seating for al fresco dining.

Greenwich Park's iconic Pavilion Café was built in 1906 and its original octagonal building, easily recognised by its dovecote, has been sensitively restored and updated to provide greater accessibility for all. The new opening is set to wow visitors with its nature-inspired interior design and new central kitchen which has been opened so customers can experience its theatre.

The Pavilion Café is surrounded by a large outside dining area with stunning views of Greenwich Park, alongside a new seasonal pop-up barbeque space, and a new Pavilion Kiosk serving ice cream and hot & cold drinks.

The Pavilion Café is a much-loved destination in the heart of Greenwich Park. Known for its delicious breakfasts, the new menu has been tweaked to include buttermilk pancakes and breakfast baps alongside its classic full English breakfast, and hearty vegan alternative.

** The new cafe is a key element of Greenwich Park Revealed: a £12 million, 4-year investment into the park. The project will restore, protect, reveal, and share the park's natural heritage and deliver spaces, events, and opportunities for the local community, supported by The National Lottery Heritage Fund and The National Lottery Community Fund.*

The Ignatius Sancho Café, Greenwich Park



The Ignatius Sancho Café honours the remarkable writer, composer and abolitionist who lived by Greenwich Park in the 18th century.

Actor and author, Paterson Joseph, officially opened the café in a lunchtime celebration attended by guests from the local community and further afield.

Accompanied by long-time musical collaborator, Ben Park on the cello, Joseph delivered readings from letters written by Ignatius Sancho which were published in 1784, alongside excerpts from his life, in Joseph's first novel, 'The Secret Diaries of Charles Ignatius Sancho'.

Local musicians performed music composed and inspired by Sancho.

The café is a vibrant community space with accessible toilets, transformed from a private, residential lodge. The café sits within a new, landscaped community location, called Vanbrugh Yard, which was previously an underused private, commercial yard. In addition to the café, this new public space includes a volunteer hub, and a community kitchen garden.

The café is open from 8am to 5pm daily, serving freshly made pastries and cakes, toasted sandwiches, flatbreads, wraps, salads as well as ice cream and sundaes.

For more information about Ignatius Sancho: [Remembering Ignatius Sancho | The Royal Parks](#)

Greenwich Park Revealed Project, 2024–25



The Royal Parks has embarked on the second phase of its Greenwich Park Revealed project to restore Greenwich Park's disappearing 17th century landscape. The project will also create new facilities to service the park's five million annual visitors, including an improved viewing platform by the General Wolfe statue.

Greenwich Park hosts a unique, formal landscape, commissioned by Charles II in the 17th century and designed by French landscape architect André Le Nôtre - best known for designing the world-famous Versailles gardens, outside Paris.

A new, landscaped viewing platform at the famous viewpoint by the General Wolfe Statue will transform the popular area into an accessible, enlarged public space. The platform will be extended to provide a piazza for public enjoyment and cultural events, with a new catering kiosk and room for outdoor seating.

The landscape features of the 'Grand Ascent' - giant, grass steps on Observatory Hill, which lead up to the Royal Observatory - will be expertly redefined and returned to their original splendour.

As well as protecting the park's heritage, the project will expand valuable acid grassland habitats, supporting birds and pollinators, such as ground-nesting bees and wasps. The restored tree avenues will provide a foraging habitat and movement corridors for wildlife.

Work is also underway to create brand new community facilities, including a new café which is due to open this Spring, a volunteer hub, a community garden, and a new learning space in The Wilderness enclosure.

** The charity, which manages London's eight Royal Parks, is funding the project alongside a £4.5m grant from the Parks for People programme joint funded by The National Lottery Heritage Fund and The National Lottery Community Fund.*

Visit Greenwich

2 Cutty Sark Gardens, Greenwich, London SE10 9LW

020 8103 3055 • info@visitgreenwich.org.uk • visitgreenwich.org.uk • @visitgreenwich

Royal Borough of Greenwich Destination Management Company • Company Number: 08543882

IFS Cloud Cable Car: London Cable Car Experience



Just outside The O2 is IFS Cloud Cable Car and **London Cable Car Experience**, a must-do leisure attraction among Londoners and tourists alike. Providing a unique opportunity to experience the city's iconic skyline as you relax and take in aerial views of the capital. Some of the landmarks that can be seen include Canary Wharf, St Paul's Cathedral, the Shard, The O2, the Thames Barrier, Maritime Greenwich and the Queen Elizabeth Olympic Park.

The IFS Cloud Cable Car is the UK's first and only urban cable car. A panoramic experience to rival anything in London, it soars 90m above the waters of the Thames, connecting the Royal Docks to Greenwich Peninsula. Recipient of a Travellers' Choice for 2023, it's the perfect centrepiece to a day out around Greenwich Peninsula, one of the capital's most diverse and dynamic neighbourhoods. The London Cable Car Experience takes you behind the scenes of this engineering marvel, with children's activities, historical displays, and even a **VR experience** and **teddy-bear making workshop**.

Visit Greenwich

2 Cutty Sark Gardens, Greenwich, London SE10 9LW

020 8103 3055 • info@visitgreenwich.org.uk • visitgreenwich.org.uk • [@visitgreenwich](https://www.instagram.com/visitgreenwich)

Royal Borough of Greenwich Destination Management Company • Company Number: 08543882

Uber Boat by Thames Clippers: Earth Clipper & East Zone River Roamer



Experience Greenwich like never before as you speed along the River Thames with Uber Boat by Thames Clippers. Departing from key piers every 10–20 minutes, and taking just 24 minutes from central London, the service offers a unique, quick, sustainable, and stylish way to explore the city.

You can now make more eco-friendly journeys through the capital. Uber Boat by Thames Clippers recently launched **Earth Clipper**, the first of three new hybrid vessels which reduce CO₂e by almost 90% compared with running solely on conventional marine diesel! So, not only do you benefit from travelling in style, but also feel good about doing so in an environment-friendly way. The vessel is also quieter, so you can sit back and soak up the sights and sounds from the river. Earth Clipper will soon be joined by two further hybrid vessels – Celestial and Mars Clipper – as the business works towards its targets of reducing carbon emissions by 50% by 2030 and net zero by 2040.

Go unlimited with Uber Boat by Thames Clippers and explore Greenwich by river with the **East Zone River Roamer**. The East Zone River Roamer is the easiest way to connect all of the East and Southeast areas of London along the River Thames between Canary Wharf and Woolwich (Royal Arsenal), including Greenwich and North Greenwich piers. The full network extends from Putney in the west to piers in central London and through to Barking Riverside in the east, plus occasional services to and from the historic Gravesend pier.

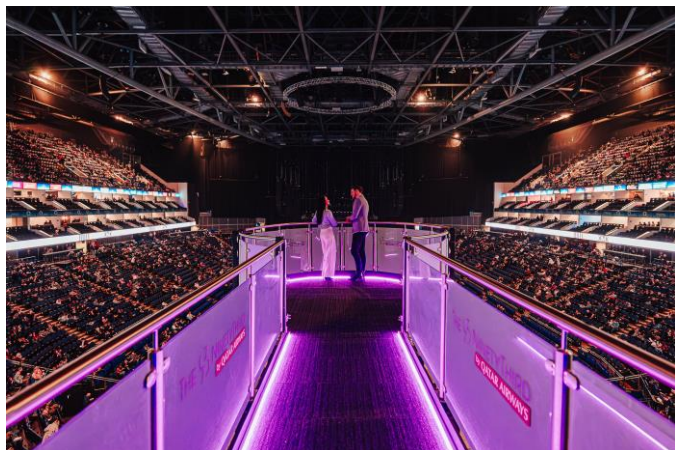
Visit Greenwich

2 Cutty Sark Gardens, Greenwich, London SE10 9LW

020 8103 3055 • info@visitgreenwich.org.uk • visitgreenwich.org.uk • [@visitgreenwich](https://www.instagram.com/visitgreenwich)

Royal Borough of Greenwich Destination Management Company • Company Number: 08543882

The NinetyThird by Qatar Airways at The O2



The O2 has launched its new multi-million-pound premium members club, alongside luxury airline naming rights partner Qatar Airways '**The NinetyThird by Qatar Airways**' – a VIP members club which elevates the premium hospitality experience at the world's most popular live entertainment, leisure, and retail destination.

The new premium space has been launched with naming rights partner Qatar Airways, the national carrier of the State of Qatar, as part of a multi-year deal. Symbolising excellence in the worlds of aviation and live entertainment, this partnership enables Qatar Airways to merge their world-renowned hospitality with The O2's evolving premium offering.

Set over 1,150 square meters, The NinetyThird by Qatar Airways is home to the arena's first high-end, 50-seater, on-site restaurant and several premium bar areas which are all exclusive to members. In addition to the main bar area, members can also visit The Golden Circle, a private, floating bar housed within the space, and Bar 1800 – an intimate cocktail bar serving a range of signature cocktails developed exclusively for the space and inspired by iconic moments in The O2's history. The design of the new members club also draws inspiration from the venue's rich music heritage, with over 50 references to artists, performances, and iconic moments at The O2 arena. Marvel at the engraved setlists from superstar residencies with the likes of Elton John and witness a homage for the venue's '21 Club' and Prince's iconic 21-night residency at the venue in 2007.

For more details, click [here](#).

InterContinental London – The O2: Peninsula Ballroom



InterContinental London – The O2 is a riverside hotel and purpose-built conference centre situated on the vibrant Greenwich Peninsula. The hotel features a dedicated 4,500sqm conference centre and meeting spaces. The hotel features UK's largest pillar-free ballroom accommodating 3,000 delegates, with a separate entrance, away from the main hotel lobby allowing for complete privatisation of events.

The **NEW Peninsula Ballroom** presents an exclusive and opulent entrance, complete with an art-deco-inspired foyer featuring two chic bars. Boasting a spacious area of 1,300 square meters, this grand ballroom can comfortably accommodate up to 1,000 guests. Additionally, it offers the convenience of being able to divide the ballroom into two separate soundproof breakout rooms.

In addition, there are 19 additional event spaces including the Riverview Suites and the Greenwich Suites that can also be used individually or as a multiple event space for dining, breakout sessions and meetings to accompany main event. The Oval is an outdoor space available at the front of the hotel.

Five destination inspired restaurants and bars including **Kinaara** – a Contemporary Indian Fine Dining restaurant and a stunning **Eighteen Sky Bar** on the 18th floor which can be hired for exclusive use and social events.

Sail through London and celebrate special occasions with City Cruises



City Cruises is here to help visitors celebrate all types of occasions while exploring London. Tours on offer include sightseeing cruises perfect for a family day out, dining cruises such as Lunch, Afternoon Tea or Dinner cruises as well as special events such as Jazz and Elvis cruises. If you're planning a private celebration or work event, they offer a variety of private hire.

For a taste of adrenaline, the **Thamesjet speedboat** is a chance to ride the Thames in style as passengers will follow twists and turns on the river. Though this special cruise goes at thrill-seeking speeds, there is plenty of opportunity to take photos iconic landmarks.

24-hour hop on, hop off pass - Enjoy a day full of fun while sailing along River Thames. Perfect for families and for sightseeing enroute to Greenwich.

Afternoon Tea Cruise brings together all the family for a quintessentially British meal on the river with London's iconic sights providing a perfect backdrop.

Lunch Cruise is a unique and memorable way to see the capital while you enjoy a delicious two course lunch. You will be taken on a relaxed voyage past London's riverside attractions.

Evening Cruise is perfect cruise for pre-dinner drinks, date nights, catching up with friends or winding down with colleagues. The ever-popular evening cruise is suitable of all types and people of all ages.

The **London Dinner Cruise** is a unique and exciting celebration or date night idea. Guests will delight in sparkling wine, a three-course dinner and the sounds of live music, a perfect night for those looking for a more memorable night than going to a traditional restaurant.

Also available are themed cruises including the **Jazz Dinner Cruise**, **Elvis Tribute Cruise** and the **Murder Mystery Dinner Cruise**. **Valentine's Day** - choose from Champagne Afternoon Tea Cruise, Champagne Evening Cruise, Champagne Dinner Cruise. **Mother's Day** - Afternoon Tea Cruise, Mother's Day Lunch Cruise.

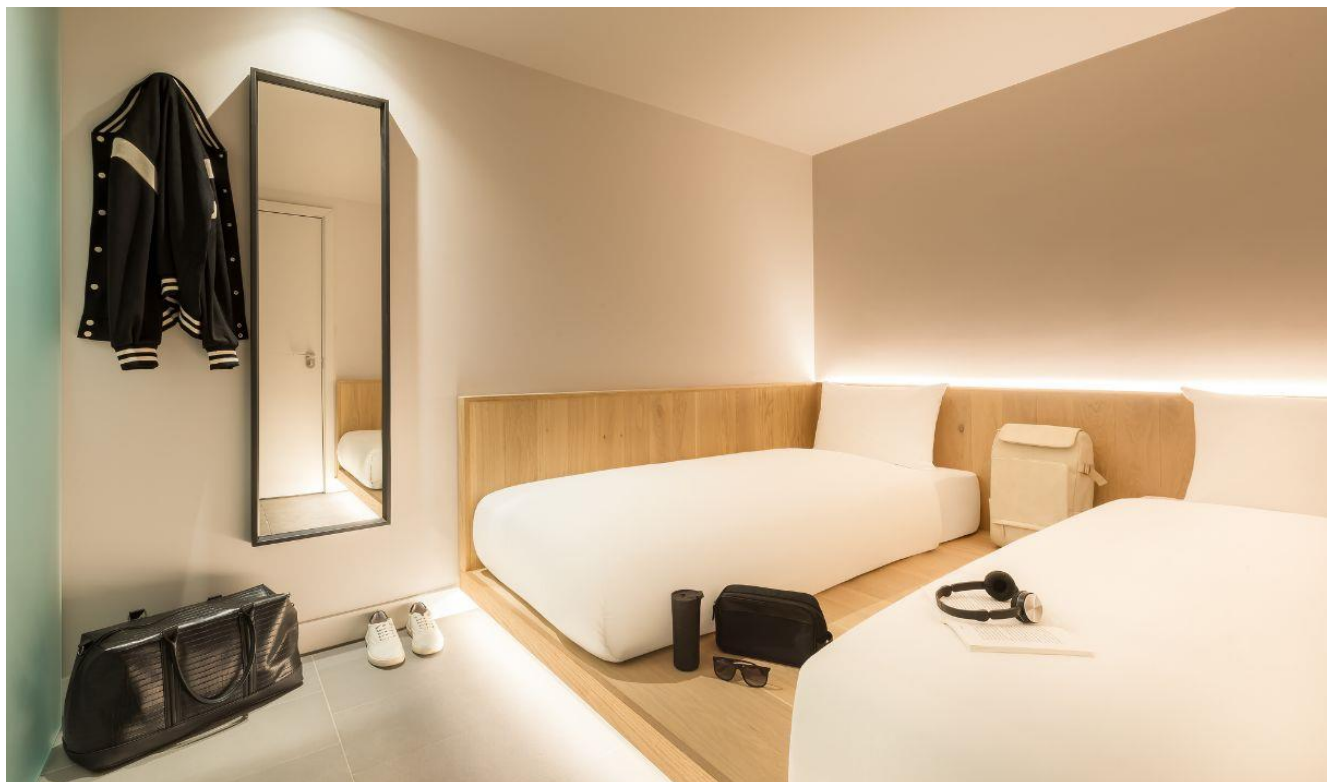
Visit Greenwich

2 Cutty Sark Gardens, Greenwich, London SE10 9LW

020 8103 3055 • info@visitgreenwich.org.uk • visitgreenwich.org.uk • @visitgreenwich

Royal Borough of Greenwich Destination Management Company • Company Number: 08543882

Zedwell Hotel Greenwich



Zedwell Hotel Greenwich is a unique oasis in the heart of historic Greenwich. Unlike traditional hotels, they've tailored the space to prioritise sleep, enhance health, and foster wellbeing. The rooms, free from distractions like televisions and designed with sleep experts, offer a serene retreat. Fresh, purified air, noise-reducing features, and state-of-the-art amenities create the ultimate sanctuary. Whether you're in London to explore, work, or simply relax, Zedwell Greenwich stands as an ideal haven for restorative rest.

Décor intertwines the calming energies of air and water, capturing the soothing ambiance of nearby waters and the serenity of the clouds reflected on the hotel's façade. This offers a harmonious balance between mind and body for every guest staying at the signature cocoons – which are windowless and insulated against external light, noise, and temperature variations.

Reserve your unique Zedwell sleep experience and discover why the guests continue to choose the tranquility and comfort Zedwell Hotel offers, time and time again.

Address: Cavatina Point, 7 Harmony Place, Greenwich, London, SE8 3FB

ibis London Greenwich



ibis London Greenwich is a modern and comfortable hotel located in the heart of Greenwich, a historic and vibrant neighbourhood in London. The hotel offers a range of well-appointed rooms designed for a comfortable stay, along with amenities such as free Wi-Fi, a bar and an on-site restaurant serving delicious meals. An ideal place for leisure or business trips.

Nestled in the heart of Greenwich, just a stone's throw away from iconic attractions like the Royal Observatory, Cutty Sark, and the historic Greenwich Park, the ibis London Greenwich offers an unbeatable location for both leisure and business travellers.

Address: 30 Stockwell Street, Greenwich, London, SE10 9JN

iFLY London at The O2



iFLY London at The O2 is where the dream of flight becomes a reality.

An unforgettable sensation of flying awaits you at iFLY London Indoor Skydiving at The O2. Replicating the exact experience of freefall, budding daredevils can experience the joy of human flight without so much as a parachute – and all just 15 minutes from Central London.

This new unforgettable leisure experience gives thrill-seekers of any age or ability the opportunity to experience the excitement of flight.

Address: The O2, Peninsula Square, Greenwich Peninsula, London, SE10 0DX

The Elizabeth line



The Elizabeth line provides a quicker and more direct travel routes across London, reducing journey times and creating new transport links. Up to 12 trains an hour will allow residents to travel to Canary Wharf in just eight minutes, Liverpool Street in 17 minutes, Bond Street in 22 minutes and Heathrow in 55 minutes. The route passes through 41 stations from Reading and Heathrow in the west, through new twin-bore 21 km tunnels to Shenfield and Abbey Wood in the east.

This incredibly rapid transport system has made living and working in Woolwich even more attractive. The new stations each have their own, distinct character, which reflect the environment and heritage of the local area.

Now with a shorter commute time, it is easier and quicker to enjoy evenings out at Woolwich Works and Greenwich+Docklands International Festival (FESTIVAL.ORG) during summer time. Woolwich also has speedy river links around the area.

CONTACT US

For press and media queries and image requests, please contact
media@visitgreenwich.org.uk

For advice on planning and booking your next group visit to Greenwich, please contact
info@visitgreenwich.org.uk